

CONTENTS

Noticeboard	1	Orthoptera report	9
RNHS and other events	1	Plant galls report	14
High tides in North Norfolk	2	Insects and others	14
Weather summary	2	Glow-worm notes	17
Amphibian and reptile report	3	Mycology notes	18
Bird report	4	Mammal report	18
Botany notes	7	Bat report	20
Lepidoptera notes	7		

NOTICEBOARD

Winter Programme and Membership Card

Comes with this *Fieldfare*. Please sign it straight away (names of junior members should be put on adults' cards) and always carry it if you go to Eyebrook or Burley Wood, or use it for books at Uppingham Sports and Books. This card has details of events through to April 2011, so you can plan ahead. Looks interesting!

As always, membership subscriptions are due promptly on January 1st. You can renew before that date. All who renew, by Standing Order, cheque or cash, will receive the next Membership Card (with summer programme) with March *Fieldfare*. Anyone who has only just joined, however, is not due to renew until 1.1.12.

RUTLAND NATURAL HISTORY SOCIETY events

Sunday 17 October **HOLME-NEXT-THE-SEA** **10.00 am**

Meet Peter Scott at the Holme Dunes National Nature Reserve, Norfolk, to see migrating birds. Entrance is through Holme village at OS Landranger 132, TF697437, meet at Visitor Centre TF716451, cost £2.50 per person.

Sunday 14 November **OAKHAM CANAL** **10.30 am**

An RNHS led meeting to the Oakham Canal. On the road from Oakham to Ashwell, turn left at mini-roundabout (to Langham) and meet in layby, OS Landranger 130 SK865110.

INDOOR MEETINGS

Indoor meetings are held at the Burley Road School, Oakham: there is a charge of 40p for tea/coffee/biscuits.

Tuesday October 5 **SPITSBERGEN AND** **7.30 pm**

NORWEGIAN COASTAL VOYAGE

Whales, polar bears, little auks and seals ... a talk by Trevor Gunton.

Fieldfare

Chairman

Mrs A Tomlinson
River House, 9 Aldgate
Ketton PE9 3TD
01780 721622

Secretary

Mrs L Worrall
6 Redland Close
Barrowden LE15 8ES
01572 747302

Membership Secretary and Record Cards

Mr G R Worrall
contact: as Secretary above

Fieldfare Editor

Mrs H Ellis
Old Hunt's Maltings
Water Street
Stamford PE9 2NJ
01780 482048

Programme Secretary

Mrs D Whitefield
Dairy Cottage
33 Somerby Road
Knossington LE15 8LY
01664 454578

Express Printing

01933 228855

Tuesday 2 November FRESHWATER LIFE 7.30 pm

A talk by Steve Woodward of the Loughborough Natural History Society.

Tuesday 7 December TEN YEARS OF OLD SULEHAY AND RING HAW 7.30 pm

A talk by Henry Stanier, Ecology Groups Officer for the Wildlife Trust for Beds, Cambs, Northants & Peterborough, and RNHS member.

LEICESTER AND RUTLAND WILDLIFE TRUST

Indoor events are held at the Anglian Water Birdwatching Centre, Egleton; admission £1 includes tea/coffee/biscuits. See www.lrwt.org.uk, or phone 0116 272 0444 in office hours, for other events in Leicestershire and Rutland, including guided walks, for which it is often necessary to book.

Monday 18 October PHENOLOGY 7.30 pm

Kate Lewthwaite from the Woodland Trust will speak about the study of plant and animal life cycles and how they are influenced by seasonal variations in climate.

Monday 15 November BEES 7.30 pm

George Shepherd will give a talk, with DVD, about bees.

LINCOLNSHIRE WILDLIFE TRUST

See www.lincstrust.org.uk, or phone 01507 526 677 in office hours, for details of the LWT Bourne Group's events and other Lincstrust events in Lincolnshire.

HIGH TIDES IN NORTH NORFOLK Nola Thurlow

High tides for Kings Lynn. Times in GMT.

October				November			
Sunday	3	01.07	14.18	Sunday	7	06.28	18.52
	10	07.30	19.55		14	-	12.26
	17	01.17	14.46		21	05.41	18.07
	24	06.42	19.04		28	10.54	22.59
	31	-	12.26				

WEATHER SUMMARY Roy Lemmon

87 Empingham Road, Stamford PE9 2SU. Telephone: 01780 762051

July 2010

Atmospheric pressure and wind The lowest pressure, 996 mb, occurred on the 15th and the highest, 1025.5 mb, on the 6th. From this it can be seen that there were no significant highs or lows during the month, in fact throughout the UK barometric pressure was below the long-term average. More significant is the fact that winds were almost entirely S-W throughout the month, there were only 4 days on which it was otherwise. This is the first time since November 2009 that we have had this scenario and this of course has impacted considerably on the temperature.

Temperature The mean night-time minimum I recorded was 13.3 °C and, apart from 2006, this

is the highest since 2003 (which was exactly the same figure). The highest minimum was 17.9 °C on the 1st, and the lowest was 9.0 °C on the 5th. The mean day-time maximum was 24.4 °C, rather lower than 2006 at 27.8 °C but higher than other years back to 2002. The highest values I recorded were on the 9th, 30.5 °C, and the 10th, 29.6 °C, and the lowest maximum was 18.7 °C on the 12th. Hence this was the warmest July since 2006 and nationally only 17 Julys in the last 100 years were warmer.

Rainfall The pattern of low rainfall for the area continued this month. I recorded a total of 35.1 mm (1.38 inches) which is 61.5% of my long-

term-mean for this month. During the first 10 days no rain fell and then there was a rainy spell, the 11th to 17th, in which 62% of the month's total occurred; the rest was scattered over the remaining days. It is interesting that the rainfall averaged over England and Wales for this month

August 2010

Atmospheric pressure and wind Generally pressure showed no great variation over the month. The lowest I recorded was 993 mb on the 23rd and then in the last two days it rose to between 1023 and 1026 mb and continued that way into September. Winds were generally S-W apart from a spell, 12th to 17th, when they were NW-N, and again briefly between 26th and 28th when they were NW-NE.

Temperatures A cool August with a mean night-time minimum of 11.23 °C, the coolest for at least 8 years and considerably cooler than 2009, which was 12.43 °C, and 2008, 12.56 °C. The mean day-time maximum was 21.49 °C, again well down on the last two years which were 23.23 °C and 22.0 °C respectively. Averaged nationally this was the coolest August since 1993.

was 66.0 mm (2.59 inches) or 116% of the average for the standard reference period, 1971 to 2000.

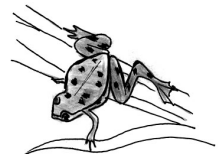
Sunshine This, averaged over England and Wales, was 170 hours or 80% of the LTM, the lowest in July since 1998.

Rainfall A very wet month. I recorded a total of 135.1 mm (5.3 inches) which is 227% of my LTM. Averaged over England and Wales the rainfall was 106.2 mm or 147% of the LTM for the standard reference period. Here the rain was spread over the whole month, there were 12 days on which I recorded no precipitation and the heaviest, 35.1 mm (1.38 inches), occurred on the 25th and continued on the 26th when another 19.2 mm (0.75 inches) fell.

Sunshine Averaged over England and Wales this amounted to 150 hours, 76% of the 1971-2000 mean. Only 10 Augusts in the last 100 years have been duller. I have obtained mean figures for RAF Wittering which go back, with some gaps, to 1946 and for August the figure is 174.5 hours. I don't see that precise conclusions can be drawn from this, but clearly it was a dull month.

AMPHIBIAN & REPTILE REPORT compiled by Dr C. H. Gallimore

The Stone House, Reeves Lane, Wing LE15 8SD. Telephone: 01572 737343



July/August 2010

As usual there have been relatively few records in these months, but what they have lacked in quantity they have made up for in quality.

There were a few records of **Common Frogs**, including froglets on 18th July in Barrowden and on 22nd July at Prior's Coppice. Solitary adult frogs were also reported from gardens in Oakham and Wing. In addition to the usual road casualties, there were also dead frogs reported from gardens for less obvious reasons. The Worralls found a dead frog, with most of one hind leg missing, in a dwarf lilac tree in their garden about five feet above the ground. Corvids and Grey Herons were named as suspects, although I would have thought that a heron would not bother to nibble the leg but would have swallowed it in one gulp. While the culprit is likely to have been avian, there are arboreal mammals to consider and Grass

Snakes can climb, although, like the heron, they would have swallowed it whole.

Common Toad toadlets were recorded from Leighfield throughout July with a maximum of more than ten on 13th July. The only other records were of a dead toad in a pond at Stocken and a small toad crossing grassland by Ketton Quarry. The sole newt record concerned a **Smooth Newt** under a pile of logs at Stocken on 10th August.

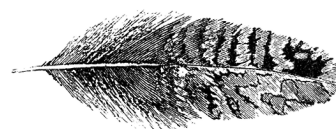
Viviparous Lizards were recorded from Ketton Quarry on 31st August, where at least three were seen on rocks in the Donkey Paddock. A **Slow Worm** was again seen under a corrugated sheet at Clipsham on 25th July.

There were three records of **Grass Snakes**, one concerning quite a large snake crossing the main road at Ketton on 4th July. Another was basking by a hedge at Leighfield on 6th July, and a third was under a corrugated sheet at Ketton Quarry.

My thanks to the following who sent records: T Caldicott, J Crosby, J Harris, R Lemmon, P & E Mann, J Myers, E Northen, B & D Parker, and L & G Worrall.

BIRD REPORT compiled by T. Mitcham

30 Sutherland Way, Stamford PE9 2TB. Telephone: 01780 751268



July/August 2010

Wildfowl and waders dominated sightings during these months as autumn migration got underway. Low water levels at both reservoirs attracted a wide variety of waders, culminating in Kentish Plover and Pectoral Sandpiper at Eyebrook. At Rutland Water the usual large counts of Gadwall and Tufted Ducks were a feature of August but there were good numbers of other species too. A Bittern was an unusual summer sighting at Egleton whilst a Nightjar near Glaston was also unexpected. Small numbers of Wheatears and Whinchats passed through – reminding us that autumn really is on its way.

My thanks to the following for their records : M A Branston, A Burdett, T Caldicott, J Crosby, Dr C Gallimore, B Jest, P Langston, LROS, A Malcolm, P Mann, T Mitcham, J W Nourish, L Park, D Perril, Jill Stapleton, A R & M A Thorp, L & G Worrall.

Mute Swan. 111 were at EBR on 11.07.

Ruddy Shelduck. There were 3 at RW(Egleton) on 07.07, increasing to 4 by mid-July.

Gadwall. 973 were counted at RW on 17.08.

Pintail. There were two at EBR on 29.08 and four at FHP from 30.08.

Garganey. A max of four was at RW between 14.07 and 15.08.

Shoveler. A pair bred at RW(Egleton) and for the first time at FHP, where there were 14 on 24.08.

Red-crested Pochard. Up to seven were at RW between 01.08 and 29.08, with one at EBR between 10 and 16.08.

Tufted Duck. An impressive 3695 were counted at RW on 17.08.

Common Scoter. Singles were at RW on four dates between 06.07 and 06.08.

Ruddy Duck. A male was at RW(Egleton) on 13.08.

Grey Partridge. Two were near Gorsefield Wood on 06.08.

Great Crested Grebe. Three nests were near the inflow at EBR on 11.07.

Black-necked Grebe. Singles were at RW from 01.08 to 06.08, and 16.08 to 29.08. One was at EBR from 15 to 22.08.

Bittern. One was in lagoon 3 reedbed at Egleton on 14 and 28.08.

Cattle Egret. Following one at RW last year the third county record was one at EBR on 03/04.08.

Little Egret. Present at RW throughout both months with the Burley Fishponds roost reaching 35 on 03.08. Up to six were at EBR from 11.07 to the end of Aug, and one was at Leighfield on 30.06, with singles there on 06.08 and 22.08.

Grey Heron. There was a good count of nine at LFP on 06.07 and six were at EBR on 01.08.

Water Rail. Breeding was confirmed on both sections of RW reserve and also on a pond at Lyddington Crossing.

Red Kite. One or two were noted at regular sites at Stocken and FHP with five together over Barrowden on 06.08.

Marsh Harrier. Juveniles were at RW (Egleton) on 01.13 and 14.08 with a male there on 23.08.

Sparrowhawk. Garden records were received from Stocken, Stamford and Wing. Fledged young were heard calling at two sites in Exton Park and at Ketton between 17.07 and 07.08. Regular hunting forays at Stocken with House Sparrow and Blackbird killed also indicate local breeding.

Buzzard. Single birds were widely reported. Six at FHP on 06.08 was the max count.

Osprey. Away from RW, singles were noted on several dates at LFP between 03.07 and 25.08. A juvenile was at FHP on 28.08.

Kestrel. Probably bred at FHP, using a natural site. Three or four fledged from a nestbox at Lyddington Crossing and breeding was also noted at the RW(Lyndon) Centre.

Hobby. Five pairs were confirmed nesting across the county and there were sightings over Oakham, at Stretton, FHP, Wing, RW and Barleythorpe.

Peregrine. Juveniles were at Stocken on 16.08 and over Exton Park on 24.07, with an adult at FHP on 03.08.

Oystercatcher. Pairs bred on both sections of the RW reserve. At Stocken one flew over, calling, at 10 pm on 17.08.

Avocet. One was at RW(Egleton) on 15.08.

Little Ringed Plover. c.10 pairs bred at RW(Egleton) and one pair at another site. There were two at EBR on 08.08, and one there on 29.08.

Ringed Plover. There were a pair and two juveniles at RW(Eggleton) on 23.07. Good counts there of migrants included 42 on 17.08, and c.30 on 26.08.

Kentish Plover. A juvenile was at EBR on 28–29.08. This is the first Rutland record since one there in May 1994.

Lapwing. Autumn migration saw fifty near Ashwell Court on 30.07 and at EBR were 1056 on 08.08. 892 were counted at RW on 17.08.

Knot. Singles were at EBR on 14 and 27.08. One was at RW on the latter date with 2 the next day.

Sanderling. Singles were at RW on four dates between 13 and 26.08.

Pectoral Sandpiper. One was at EBR from 27 to 30.08.

Curlew Sandpiper. There were nine at RW on 27.08 with five there the next day, when there were also five at EBR.

Dunlin. Generally small nos were at both reservoirs from 13.07, with max counts of 33 at RW on 15.08 and 18 at EBR on 29.08.

Ruff. Noted at RW from 02.07 and EBR the following day. Max counts were 16 at RW on 17.08 and 27 at EBR on 23.08.

Snipe. One was at RW(Eggleton) on 07.07 with 26 on 17.08. One was at Banthorpe Gravel Pit on 24.07 and there were eight at EBR on 29.08.

Black-tailed Godwit. There was an excellent passage at RW with a max of 31 on 11.07, with odd birds at EBR to 27.08.

Whimbrel. One was at RW on 16.07. There was one at RW on 28.07 with two there on 17.08.

Curlew. Three were at RW on 12.07 with four there on 17.08. Nine flew over LFP on 31.08.

Common Sandpiper. Noted at RW from 07.07 with a max of 18 on 17.08. Two or three were at EBR from 23.07, with singles at FHP on 24.07 and LFP on 25.08.

Green Sandpiper. Reported at RW from 07.07 with 32 on 17.08. One or two were at EBR from 01.08, with one at FHP on 28.08.

Spotted Redshank. One was at RW(Eggleton) on 27.07, with two there on 10.08 and one on 15.08.

Greenshank. Reported from RW from 07.07, with a max of 18 on 01.08. One or two were at EBR between 23.07 and 24.08.

Wood Sandpiper. One was at EBR on 11.07. All other records were from RW between 21.07 and 27.08 – singles apart from three on 19.08.

Redshank. The only records were singles at EBR on 08.08 and RW on 17.08.

Turnstone. Up to three were at RW between 01.08 and 27.08.

Mediterranean Gull. An adult was at RW(Eggleton) on 29.08.

Little Gull. A first-summer bird was at RW from 23.07 to 03.08 and a juvenile from 16.08 to 29.08.

Yellow-legged Gull. Up to eight were reported from RW between 03.07 and 10.08. Singles were at EBR on 08.08 and 19.08.

Caspian Gull. Singles were at RW on 06.07 and 09.07.

Sandwich Tern. Singles were at RW between 19.07 and 15.08 with two on 14.08.

Common Tern. 11, including two juveniles, were at EBR on 11.07 with nesting on both platforms there.

Arctic Tern. One was at RW on 16.08.

Black Tern. Up to six were at RW between 23.07 and 27.08.

Turtle Dove. Two were at RW(Eggleton) on 01.07 – our only record.

Cuckoo. Song was heard at Stocken on 03.07. One was at LFP on 09.07. Last noted at Stocken on 30.07 and at Burley Wood on 05.08.

Barn Owl. Five young were ringed in Exton Park, one at Greetham Valley GC and two near Lyddington. Also noted at Brooke, LFP, Gorsefield Wood and Beaumont Chase Farm.

Little Owl. Reports came from Barrowden, Barleythorpe, FHP and LFP.

Tawny Owl. Calling birds were noted at Stocken and Barrowden.

Nightjar. A migrant was seen in flight near Glaston on 20.08.

Swift. 22 were noted over Uppingham on 06.07 and c.50 at Barrowden on 18.07, where birds were seen entering nest sites. Small numbers were on passage over Barrowden, Stocken and Stamford throughout August with three at EBR on 2.08.

Kingfisher. Noted at Brooke, Barleythorpe and LFP in both months. Singles were in Exton Park and FHP in July; 2 were ringed at RW on 11.08.

Green Woodpecker. One was in a Langham garden (no date) and there were regular records from Burley Wood (max five in Aug), LFP (max six in Aug), FHP and also Barleythorpe.

Great Spotted Woodpecker. Noted at Stocken in both months with one regular in a Barleythorpe garden in Aug.

Sand Martin. A pair at Stoke Dry chose an unusual nest-site in a hole in the masonry of an archway in farm buildings, where the sitting bird could be seen with the aid of a torch. How this nest-site was found by the birds is difficult to understand as the nest-site could not be easily viewed from nearby.

Swallow. Good numbers were reported from several sites in both months. 80 were at LFP on 03.07, with 120 on 06.07. Up to 70 were at Stocken in mid-July with 100 on 26.07. Good nesting success was noted at Barrowden with five nests in Redland Close. 100 were at Stocken in Aug and 60 on wires at Langham on 17.08.

House Martin. c.140 were over Stocken on 02.08 and c.40 were noted at Barrowden on 05.08.

Yellow Wagtail. Eight were at LFP on 28.08.

Pied Wagtail. A roost of c.60 assembled in a greenhouse at Stocken from 17.08.

Redstart. Singles were at Leighfield on 22.07 and 25.08.

Whinchat. One or two were noted between 24.07 and 29.08 at RW, EBR, LFP, Luffenham Airfield and George Henry Wood (Stretton).

Wheatear. There were Aug records between 8th and 28th from Langham, Luffenham Airfield (five on 21.08) and Leighfield.

Mistle Thrush. Post-breeding flocks were reported from Leighfield and Stocken from 15.07 onwards. Max counts were 25 in two flocks at Stocken on 20.08, and 13 at Leighfield on 11.08.

Grasshopper Warbler. Song noted at Leighfield to 09.08 with one seen there on 22.08.

Reed Warbler. Two were at LFP on 03.08 and 31.08.

Lesser Whitethroat. Nine were at Leighfield on 19.07 and 13 there on 25.08.

Whitethroat. Up to 16 were at Leighfield to 25.08 with five noted on 31.08.

Garden Warbler. August birds were seen at Burley Wood and LFP with one for several days in a Barleythorpe garden (no date).

Blackcap. Well reported from Burley Wood and Leighfield in both months with 36 at Burley on 05.07 and 22 there on 18.08. 24 were at Leighfield on 03.07.

Chiffchaff. In Burley Wood there were 45 on 21.07 and 55 on 08.08. At Leighfield 16 were found on 06.07, increasing to 32 on 28.08. 15 were at FHP on 24.08.

Willow Warbler. Two were at Leighfield on 31.08.

Goldcrest. There was a good count of 34 in Burley Wood on 30.08.

Spotted Flycatcher. Family groups were at Leighfield on 22.07 and Exton Park on 07.08. Other reports came from Barleythorpe (six on 26/27.08), Burley Wood, Bisbrooke churchyard, Priors Coppice and FHP (30.08).

Marsh Tit. Up to 13 were in Burley Wood in both months with a max of four at Leighfield on 19.08.

Nuthatch. 22 were in Burley Wood on 05.07. Singles at New Wood, Empingham, Oakham and Leighfield presumably indicate post-breeding movements.

Treecreeper. Three were at Stocken on 03.08.

Jay. Ten were in Burley Wood on 18.07.

Magpie. Six were noted on a roof in Barrowden on 17.07.

Raven. Two or three were at Leighfield in both months. Singles were over Exton Park on 24.07 and Burley Wood on 27.08.

Starling. c.450 were in formation over Barrowden on 06.08.

House Sparrow. A thriving colony of up to 41 birds was reported from Stocken on 29.08. An encouraging report in these dire days for the species.

Goldfinch. Some large flocks of this species were reported : 30 at Stocken on 15.08, c.120 at Leighfield on 19 and 28.08, c.120 near Wing on 24.08 and 30 at Barrowden on 29.08. Clearly a thriving species – time to stock up on nyger and sunflower hearts!

Crossbill. Up to 18 were in Burley Wood between 06 and 21.07, feeding in spruce.

Bullfinch. c.20 were at Leighfield on 11.08. One fed on honeysuckle berries in a Langham garden on 26.08.

Wildfowl Counts for Fort Henry Ponds and Exton Park

	17.07	14.08
Mute Swan	4	11
Greylag Goose	26	7
Shelduck		1
Gadwall	11	20
Mallard	95	92
Shoveler	1	2
Tufted Duck	10	
Cormorant	1	5
Moorhen	16	41
Coot	40	63
Grey Heron	2	2
Kingfisher	1	1
TOTAL	208	245

BOTANY NOTES compiled by Graham Worrall

6 Redland Close, Barrowden LE15 8ES. Telephone: 01572 747302

July 2010

Verge monitoring continued through the month, the most outstanding record being the **Pyramidal Orchid** count on Verge 14 at Foster's Bridge, South Luffenham. Two patches occurred on the verge, the smallest opposite Chaterside Cottage at 47 spikes and the other west from the entrance to Luffenham Heath Golf Club at 341, two spikes arising from the earlier verge cut carried out in June. Only one **Common Spotted-orchid** was seen on this verge and this year NO Bee Orchids were found. **Clustered Bellflower** occurred on Verge 7 Gt Casterton to Pickworth Road, and on Verge 4 Empingham Crossroads Farm to Exton Road in good numbers.

Of the other sightings, the most seasonable reports were **Goat's Rue** on the A47 at Wardley, **Nettle-leaved Bellflower** in Exton Park and Woodhead Castle and also on Verge 7, wild **Chicory** at Martinsthorpe and **Broad-leaved Helleborine** at Deepdale Brook, the boundary between the parishes of Wardley and Beaumont Chase.

Thanks to: R Archer, P Burroughes, J Crosby, M Grimes, C Jones, R Lemmon, J Mallett, M Norris, T Mitcham, A Tomlinson, R Williams, G Worrall

August 2010

The verges had been strip mown. I have had a host of complaints this year that the strip mowing was much wider than usual. As a result **Clustered Bellflower** on Verge 4 had been cut off.

The first flower of autumn was spotted on Verge 6 at Horn Mill, **Traveller's Joy** or **Old Man's Beard**, the only wild flower that has two common names depending on whether it is in flower or seed!

Thorn-apple was reported from a verge opposite the west end of Manton Church. It was in flower and fruit – much easier to spot by its thorny fruit. The verge had been cleared and reseeded by its owner, hence the appearance of the single plant.

Gypsywort was recorded at Stocken, also late flowering **Oxeye Daisies** near the same site. A few **Woolly Thistles** were spotted in Morcott and Barrowden parishes but much smaller plants than usual – so much depends on rainfall.

I suppose August marked the change in the flowering year and only a few flowers will be found in the coming months.

LEPIDOPTERA NOTES compiled by Jean Harvey

4 Clarkesdale, Great Easton, Market Harborough LE16 8SP. Telephone: 01536 770259

July and August 2010

BUTTERFLIES

One butterfly which was seen at Ketton Quarry on August 15th caused a great deal of interest at the time. It was a Brown Argus with white markings on its wings similar to those of the Northern Brown Argus which is restricted to Scotland and N. England. After reading the *Millennium Atlas of Butterflies in Britain* and consulting other Lepidopterists, the conclusion reached was that the individual seen was an aberration of an ordinary Brown Argus. Sadly no camera had been available at the time but anyway in this instance we understand that only genetic analysis would have confirmed the true identity.

Small Skippers were recorded throughout July but there were no very large numbers as were seen last year. One final sighting came from Burley Wood on August 8th. An **Essex Skipper**

was identified at Beaumont Chase Farm at the end of July. Only four records have been received for **Large Skipper** – these were from Bloody Oaks Quarry, Leighfield Fishponds, Pickworth Great Wood and Woodhead Castle,

Brimstones were observed in Clipsham Quarry and Pickworth Great Wood in July and at Barrowden, Clipsham Park Wood and Stocken during August. At the latter, individuals were noted on a number of dates. **Large** and **Small Whites** were both well-recorded species with good numbers throughout the county. One interesting report was of a Small White being eaten by a Brown Hawker Dragonfly at Barrowden on July 30th! **Green Veined Whites** were few this year and only reported from a small number of sites. One was attracted to a moth trap at Eyebrook on August 9th.

Purple Hairstreaks were observed in Burley Wood on two dates in July and also on two occasions in early August. Three were found in Pickworth Great Wood and one was seen at Leighfield Fish Ponds (a first for this site) during the last week of July. Several **Small Coppers** were noted in seven areas of the County during the two months.

In the last week of July, **Brown Argus** were seen in good numbers in Clipsham Quarry and Pickworth Great Wood. **Common Blues** have most certainly been 'common' this year, as during the last week of July records came from 9 sites with several more added to this list for August. Amazing numbers were found at Leighfield, with 35 counted there on July 30th and by late August 55 were found on the same site. Other large numbers were seen in the Quarries and Woods. **Holly Blues** have continued to be scarce this year. Only four records were received for July and five for August.

Red Admirals were noted singly in a number of areas throughout both months, whilst a maximum of three were recorded at Stocken, where this species was seen on ten dates during August. Very few **Painted Ladies** have been observed this year. Recent records came from Leighfield, Oakham, Prior's Coppice and Stocken.

During July, **Small Tortoiseshells** were found on a variety of sites. Ten were found on thistles at Leighfield Fishponds and larvae were discovered at Beaumont Chase Farm. At Stocken, this species was recorded on nine dates in July, with

MOTHS

Firstly I should like to thank all the members who have submitted records of moths that they have found in their gardens both by day and at lights in the evening. All these will be added to the annual list for VC 55 in due course.

Humming Bird Hawk Moths were seen nectaring in gardens at Empingham, Manton, Oakham, Uppingham and at Bloody Oaks Quarry and Stocken. Caterpillars were identified as follows: an **Elephant Hawk** at Barleythorpe, a **Sallow Kitten** at Stocken and the **Vapourer** at Leighfield Fishponds and Morcott. Also, 20 **Cinnabar** larvae were found in Burley Wood in July.

A number of species were identified at outside lights at Barleythorpe. **Large White Plume** moths were seen on allotments in Oakham and also at Stocken. Among the many species seen at Stocken was a migrant moth, **Dark Sword Grass**, and 19 **Silver Ys** on August 8th which are also migrants.

14 counted on one occasion. During August, numbers were fewer here but the species was still seen on 10 dates. Approximately 50 **Peacock** larvae were on nettles in Burley Wood in early July. Over 20 imagoes were reported in Clipsham Quarry at the end of the month and others were found on four additional sites. In August, these were reported from more areas but only in ones and twos, with the exception of Stocken, where on eleven dates numbers ranged from singles to 11 and 12.

A few **Commas** were reported during July from five sites but in August only three singles were noted. Following the report in the last issue about **Dark Green Fritillaries** we have now received three further records. Firstly, one was seen on Knapweed at Eggleton on July 2nd, one which was very 'tatty' was in Burley Wood on July 21st and lastly, one was seen briefly in an Uppingham garden on July 25th.

Very few **Speckled Woods** were on the wing during both July and August but 18 were observed in Burley Wood at the end of this period. There were good numbers of **Marbled Whites** in both Clipsham and Ketton Quarries with one noted in Bloody Oaks Quarry. During the second half of July and throughout the whole of August **Gatekeepers** were recorded from a large variety of sites. **Meadow Browns** were also widespread and common but in smaller numbers than in 2009. Single **Small Heaths** were seen at Barrowden on two dates in July. There were a large number of records for **Ringlets** during July and the final few were seen in early August.

Traps were operated at Eyebrook Reservoir on July 11th and 26th. The species totals were 129 and 108, with two macromoths added to the site list on the first occasion, the **Coronet** and **Lesser Common Rustic**, and two micromoths added on the second occasion. On both nights an extra trap was placed in the Plantation in addition to the usual ones in the Dam area. With a different type of habitat, extra species were therefore added to the overall totals. On August 9th an extra trap was once again run and totals for that night were 99 species overall with a **Meal Moth** as a new species. On August 30th the overnight temperature fell to 5 °C, and thus the result was very disappointing with only 36 species.

The garden trap at Barrowden attracted 80 micromoth and over 150 macromoth species during July and August. Those of interest included a **Vestal**, which is a migrant, caught on

July 23rd, and a micromoth, the **Large Tabby**, caught on two occasions. Other species here that were of note were the **White Satin** and the **Heart and Club**.

Traps were run at Luffenham Heath golf course on July 7th (total 144 species) and at Rutland Water Reed Beds (156 species). On both of these

nights the 'highlight' was a **Reddish Light Arches**. Other good trapping sessions have been at Prior's Coppice and three further occasions at Rutland Water. With good weather during July and the first two weeks of August, trapping results would appear to have been the best since 2006.

Thanks to: J Ansley, T Caldicott, J Crosby, R Follows, M Grimes, J & R Harvey, C R Jones, A Lawrence, R Lemmon, S Lister, B Lynch, P & E Mann, J Myers, E Northen, D & B Parker, D Perril, J Rodgers, P Simmonds, M Tyler, R Williams, M Winslow and G & L Worrall.

ORTHOPTERA REPORT compiled by Phil Rudkin

10 Brooke Avenue, Stamford PE9 2RU. Telephone: 01780 762998



July/August 2010

Some surprises this period, no new species, but a good season for all of our regular orthopterans. A Daily Express article (28 August) on the weather caught my eye: 'High summer may have been a washout, but this holiday season has been the hottest since 2006, official figures showed yesterday. This summer has been a summer of two halves.'

The summer has certainly been good for our records, with healthy populations everywhere. My intrepid group were late this season in checking the Glow-worms in Burley Woods (21st July). However, it revealed the massive colonies of Dark Bush Crickets, which were in every conceivable bramble and scrub habitat, to the south west of the Eight Riding Tree.

We carried out this season's first Beaumont Chase Farm Survey, on 23rd July – many thanks to Mary and Joe Nourish. The Short-winged Conehead saga continues, with an amazing surge into the Egleton Reserve.

Some new areas in Rutland have been investigated with positive results, including a new site for Field Grasshopper, at the second field at Quarry Farm Stamford. The colony was found in pasture. The grasshoppers are an attractive dark brown colour, with stripy legs. This species mimics its habitat very cleverly. As expected, they were living in bare, mud patches amongst the grass, next to a hedgerow.

It was pleasing to receive Oak Bush Cricket sightings from an Oakham garden. Norman Gordon was hedge trimming, and when emptying the cuttings in his wheelie bin, on two separate occasions, rescued males from the corporations shredding compost.

On Saturday 14th August, the weather was poor for the Society's orthoptera meeting at Lyndon. However, in between showers, we located the species we set out to find. It was quite interesting to note that each time the sun disappeared, the stridulating stopped, and the butterflies vanished. Immediately, the sun shone, everything happened again. Check the RNHS website, to look at this meeting – and there is a photograph of members with hoods up, sheltering under the hedges. Was it really middle August! There were four different Bat Detector models being used that day.

BUSH CRICKETS

Oak Bush Cricket *Meconema thalassinum*

Four different areas for this under-recorded cricket, very welcome! The first, from a new habitat at Stocken. On 27th July, James Crosby was looking for moths in an old Oak tree, and on tapping the branches, a male and a female Oak Bush Cricket dropped down. The same method of beating, on the 28th and 30th, produced one female and two males. During early August, another male was sighted, and James will continue to investigate the numbers during the rest of the month. A new square for this species (SK 957 174).

Barrowden was next, on 6th August, at 10.05 pm. Graham and Linda Worrall noticed a female, in the carport, resting on top of their Morris Traveller (it was perhaps a vintage car fan). They particularly noticed the up-curved ovipositor. The light was on in the carport, and this is significant, as this cricket habitually comes to lights, often coming into open bedroom windows (SK 948 002).

Tim Caldicott observed one male, resting on an outside window frame, at Barleythorpe Conference Centre, on 16th August (SK 847 098).

Finally, from Norman Gordon's garden, in St. Albans Close, Oakham, on 17th August, and again on the 30th, a male each time (which had obviously been in the shrubs), found in the wheelie bin, and rescued from the shredders. New square (SK 865 087). Photograph supplied by email.

Dark Bush Cricket *Pholidoptera griseoaptera*

An important record of one nymph, caught and identified, in scrub near oilseed rape field, 5th July. This was at the southern edge of the old Oakham Canal, Ashwell. New square (SK 862 105). Elevation: 112 m. On the 21st July, from 8.45 pm onwards, the Glow-worm team heard incredible numbers of stridulating males. Several females were caught and identified. This flightless cricket was found in all areas to the south west of the Eight Riding Tree. This is possibly the largest concentration of this species in all of Rutland's woodlands! We were still encountering them at 11.0 pm as we walked back along the bottom ride towards the entrance gate. Compartments were 23/24, SK 892 093; 16/27, SK 892 098; 16/25, SK 889 095; 25/23, SK 891 094.

Roesel's Bush Cricket *Metrioptera roeselii*

Common and widespread! The high-pitched buzzing of this attractive cricket cloaks the summer scene in Rutland. This is usually the earliest stridulating cricket. First heard on 5th July, when 2 males were singing in rough grasses, near oilseed rape field, at 4.0 pm. This was at the southern edge of the old Oakham Canal, Ashwell. New square (SK 862 105).

At 2.30 pm in the rough herbage at Quarry Farm, Stamford, large numbers stridulating. One female observed by Martin Grimes (TF 018 084).

Another large colony located at the LRWT reserve at Bloody Oaks Quarry at 3.45 pm (SK 971 108).

One, stridulating male, in field, next to car park, Ketton Quarries, 11.45 pm.

Throughout the rest of July, colonies found at the new meadow, inside the fence along the cycle track, parallel to the minor road to Egleton Church (SK 877 080). A new site in the second field, in a wild flower meadow at Quarry Farm (TF 015 084). One female and one male, in Juncus, at North Arm 1, south shore of Rutland Water, Hambleton (SK 903 079). One male caught on protected Verge 8 (TF 107 018).

On the Egleton Reserve, Rutland Water, all the regular habitats holding their usual high numbers. However, extra to previous years, the grass field, next to the new lagoon (north of the Bird Watching Centre) had large numbers of stridulating males (SK 881 077).

During the first survey at Beaumont Chase Farm, on 23rd July, good colonies in the 3-metre wide grass margins, next to oilseed rape fields. This is south west of the Lodge (SP 842 989). Elevation: 101 m.

At the Rabbit Bank, Clive Jones 'netted' a female (macropterous form) (SP 840 992). Elevation: 90 m.

At the Lyndon reserve, Rutland Water, many males heard in long grasses, at the sides of the fields, just west of the Interpretive Centre.

Dawn's Paddock, near Braunston, had a large colony, just inside the gate, and more up on the hill in the meadow, on 31st July. 2 females observed (SK 841 073). Elevation: 139 m. A few minutes later we were in the The Seek (which adjoins Dawn's Paddock). At 2.30 pm, 22 °C, there were good numbers there also. Heard in the long grasses along the rides and between the trees (SK 839 072). Wing Fishing Lakes was visited, and numbers were maintained around both lakes. 4 females observed. (SK 889 023). As I was about to leave, I was in for a surprise. At 5.5 pm, I stopped the car halfway up the track, alongside a Barley crop. 4 males were stridulating in the crops, approx 5 yards in from the edge (SK 888 024).

The third survey at the Egleton reserve proved successful as previously, with the additional record of a large colony of stridulating males in rough vegetation, on the bank, behind the disabled car park, next to the centre (SK 879 072). Elevation: 91 m. 4 males heard in long grasses, in the end of the field next to the main car park, under the notice board (SK 878 072). Elevation: 91m. 6 stridulating males, in rough corner, at the top end of the Winter Trail. SK 880 074. Elevation: 90 m.

Mill Lane at Empingham was a new site (recommended by our webmaster Peter Scott). On 8th August I investigated the dyke, and located 4 stridulating males. A new square (SK 957 086). Elevation: 56 m.

Joe and Mary Nourish invited us to carry out another survey at Beaumont Chase Farm. So, on 18th August 3 members and 2 guests started at the top of Stockerston Hill, and went into the field, Top Wood Close, at 11.0 am. Halfway down the field, 2 males were heard in Juncus and Tufted

Hair Grass, in a small wet hollow (SP 847 982). Elevation: 124 m. However, the large numbers were in the conservation field, named Bottom Wood Close. Massive numbers were seen and heard in the long grasses between the trees. This proved the value of the measures taken (SP 843 983). Elevation: 98 m.

Long-winged Conehead *Conocephalus discolor*

Common and widespread! From July 18th to 22nd, Tim Caldicott found nymphs in Burley Woods, along the southern edge (SK 887 092), and one nymph at Leighfield Fish Ponds (SK 830 037).

On 20th July at 5.30 pm, I found 4 stridulating males in long grasses, and a female (macropterous form) at Quarry Farm Stamford. This was the first sound of this species this season, a little earlier than usual! On a first visit to the second field at Quarry Farm, a wildflower meadow produced a large colony (TF 015 084). Elevation: 53 m.

The first Beaumont Chase Farm survey on 23rd July had only one stridulating male, and one female nymph seen (SP 844 992). Elevation: 105 m. At the Lyndon reserve, 5 stridulating males were located in long grasses at the edge of the hay fields, west of the Interpretive Centre.

During August, Tim Caldicott went back to Burley Woods, and found many more nymphs on the 5th. On the 30th a macropterous form was found (SK 887 092). Wing Fishing Lakes produced the usual good numbers, especially around the first lake (SK 889 023). At 5.55 pm, I stopped the car on my way up the track from the Fish Ponds to witness an amazing sound. There in the barley crops, about 5 yards in from the path, were hundreds of stridulating males. What a surprise! (SK 888 024). Elevation: 90 m.

On 8th August, a new square for 3 singing males, in dyke, along Mill Lane, Empingham (SK 957 086). Elevation: 56 m.

Finally, the second Beaumont Chase Farm survey on 18th August found large numbers, much the same as Roesel's Bush Cricket, and in the same habitats. Please use the map references used for the Roesel's.

Short-winged Conehead *Conocephalus dorsalis*

The big story of season 2010! On 18th July, I was carrying out a survey at the Egleton reserve – the first Short-winged Coneheads had at last arrived. 2 stridulating males in tall rough grasses/thistles/rushes, in a field just past the Badger Watching Hide (SK 880 074). Elevation: 94 m, at 4.25 pm. The second site at 5.50 pm had 4 stridulating

males in grasses in a small-uncut corner, near Fieldfare Hide (SK 884 066). Elevation: 89 m. The third site was at the edge of the main car park, in a small rough corner, underneath the notice board – 3 stridulating males (SK 878 072).

On 31st July at 4.30 pm, I visited the sites at North Arm 1, south shore of Rutland Water, to ascertain the fortunes of the old sites. Yes, the populations were strong and healthy (SK 903 079). Elevation: 83 m. Nymphs and females caught and identified.

On 8th August, back to the Egleton reserve, and even more surprises. 3 more new sites located. Incredible! On the bank behind the disabled car park, in rough vegetation, the bank was alive with the stridulating of large numbers of males. I captured one male. Following the path along towards the Badger Watching Hide (west of the centre), there were many more heard in a large nettle bed in front of the hide (SK 879 073). Elevation: 88 m. Making my way to the Winter Trail (near Redshank Hide), another 6 males heard in tall grasses (SK 880 074). Elevation: 85 m. Finally, at 2.45 pm, heading back to the main car park, on a bend, in a Rosebay Willow Herb patch, 8 stridulating males (SK 878 074). Elevation: 90 m. This species had not been reported from the Egleton reserve before this season.

The sites off the reserve, at the North Arm 1, south shore, near Hambleton, are not far from the reserve. Has this been a sudden rapid occupation, or has there been a small nucleus undetected previously?

Speckled Bush Cricket *Leptophyes punctatissima*

Widespread and common (bat detector essential)! First sightings on 31st July, 6.15 pm, 2 stridulating males, in Ash trees, top of the slope, at North Arm 1, south shore of Rutland Water (SK 901 079). Elevation: 99 m. 6.25 pm, at the top of the hill, on the Hambleton peninsular road, 4 heard in Hawthorn hedge (SK 897 078). Elevation: 100 m. Walking down the hill, bordered by Hawthorn hedgerow, 25+ males heard in the hedges. Mill Lane, Empingham, on 8th August, had 5 singing males in Ash trees (SK 957 086). Elevation: 56 m. Into the meadow, and 4 males in Ash tree (SK 957 086). New square for this species.

On 18th August, the second Beaumont Chase Farm survey produced large colony in hedgerows, and 5 more in Ash tree, at Top Wood Close (SP 842 985). Elevation: 154 m. The conservation area at Bottom Wood Close had larger numbers stridulating in small Hazel trees (SP 846 982). Elevation: 113 m.

GROUNDHOPPERS

Slender Groundhopper *Tetrix subulata*

Tim Caldicott provided the first two records for this period. On the 19th July, one was found on a track near the River Chater, at Leighfield, west side (SK 814 042). On 10th August, one was observed on bare earth, on the Brooke Road allotments, Oakham (SK 860 081).

On 23rd August, Clive Jones found one, in his large garden, in amongst the flowers. This was a warm sunny day (SP 864 996).

GRASSHOPPERS

Common Green Grasshopper *Omocestus viridulus*

Slight decline, not so common as previously!

First stridulating heard by Tim Caldicott, near Barleythorpe Hall, on 1st July (SK 846 098). Heard again on 5th and 9th July, in same place.

2 stridulating males, in small sheep field next to the allotments at Brooke Road, Oakham, on 7th and 16th July (SK 860 081).

On 8th August, I visited a new site, at Mill Lane, Empingham. In the nearby meadow (now cut), at 4.50 pm, one, stridulating male – new square for this species (SK 957 086). Elevation: 64 m.

Tim Caldicott heard 2 males, in long grasses, by the track, at the highest point, at Leighfield (SK 809 032).

Field Grasshopper *Chorthippus brunneus*

Under recorded, but a pleasing number of reports this season, with a new square created.

1st July, nymphs and adults noted all month, highest total of 10 on 23rd July, on the Brooke Road allotments in Oakham (SK 860 081).

On 16th July, one observed on outside wall, at the Barleythorpe Centre (SK 846 098).

Pair, observed mating, on bare earth patch, by Martin Grimes and myself, 6th July, at the LRWT reserve, at Bloody Oaks Quarry. 2 more adults captured and identified, very mottled! (SK 971 108). Elevation: 83 m.

August sightings: from 12th to 17th, 6 adults observed on the Brooke Road allotments, Oakham (SK 860 081). On 17th August, 2 adults noted next to Barleythorpe Conference Centre (SK 847 098).

Finally, the new square: on 15th August at 5.30 pm, on a visit to the second field with the wildflower meadow, at Quarry Farm, Stamford, I noticed a dark-coloured species with striped legs. The habitat was bare patches in amongst the pasture, located at the field edge, next to a hedgerow. My suspicions were confirmed, when

I caught 5 adults, and identified them. The Field Grasshopper is a good flyer, and they were very active. I observed 15 adults and 2 nymphs. (Photographs taken, TF 015 084). Elevation: 53 m.

Meadow Grasshopper *Chorthippus parallelus*

Widespread and common! First stridulating heard on 6th July, at the LRWT Bloody Oaks Quarry reserve, by Martin Grimes and myself. We found huge numbers of adults and nymphs, from the entrance gate, in the dip, and up onto the bank (SK 971 108). Elevation: 83 m.

On the warm evening of 10th July, Jenny Harris led a Bat Walk in Ketton village. After an excellent session, the group then made their way up to Ketton Quarries, at 11.30 pm, for a glow-worm check. At 11.45 pm, just inside the gate in the BBQ area, 2 male Meadow Grasshoppers were heard stridulating from the grasses. This is a phenomenon that surprises people. But this grasshopper does occasionally stridulate in the dark. 'Meadow grasshoppers often sing during the night when it is not too cold. The rate is slower than in the day'. Quote from Ragge/Reynolds, 1998. Large colonies discovered in the newly created meadow/cycle track, alongside the minor road to Egleton Church (SK 877 080). Elevation: 92 m.

On glow-worm evening, 21st July, at Burley Woods, 2 found in lower ride at 8.30 pm, and 2 more in the grasses, around the Eight Riding Tree. On North Arm 1, south shore of Rutland Water, huge numbers of adults and nymphs found in pasture (SK 903 079). Elevation: 83 m.

A new square, in the meadow off Mill Lane, Empingham, on 8th August, 6 stridulating males found (SK 957 086). Elevation: 64 m.

Throughout July, at Egleton reserve, high numbers maintained in all the usual hotspots: north of the Bird Watching Centre (SK 879 072). In the uncut hay fields just past the Badger Watching Hide (SK 879 073). And the new lagoon area of small grass field (SK 881 077). Elevation: 86 m. Also the new bank around the new hide already colonised. Then to the south of the centre, excellent numbers along the path to Fieldfare Hide (SK 884 066). At the edge of the nearly complete new lagoon (SK 882 066). Elevation: 85 m. Finally, in the grasses near Tern Hide (SK 879 068).

Still in July, the Beaumont Chase Farm survey on 23rd produced the expected numbers near oilseed rape field (SP 842 989, elevation: 109 m); Deepdale Brook, and at the Rabbit Bank (SP 842 994, elevation: 92 m).

On an overcast morning, at Dawn's Paddock near Braunston, on 31st July, 6 observed, 2 caught and identified (SK 841 073). Elevation: 139 m. Finally for July, some welcome new reports from James Crosby at Stocken; from 14th to 29th, a total of 25 observed. Some were disturbed during grass mowing. James noticed the variation in the colours of this species (SK 957 174).

August sightings: at Stocken, from 3rd to 8th 7 stridulating males. At Wing Fishing Lakes on 3rd August, 6 stridulating males around the first lake (SK 889 023). At Quarry Farm, Stamford, 4 males on 15th (TF 015 084). Elevation: 53 m.

Finally, the second Beaumont Chase Farm survey on 18th had large colonies in the Top Wood Close pasture (SP 842 985). Elevation: 154 m. And massive numbers in the tall grasses, in between the trees in the conservation area, at Bottom Wood Close, SP 846 982. Elevation: 113m.

Lesser Marsh Grasshopper *Chorthippus albmarginatus*

Widespread and common, successful coloniser! Lots of July sightings, many alongside the Meadow Grasshopper. Therefore, I will list the locations, but not the map references (please refer to the maps of the Meadow Grasshopper). Any differences in location will be fully documented.

July records: 2 adults and 2 nymphs, on the Brooke Road allotments, Oakham, on 1st July. Many adults and nymphs noted all month, around Leighfield Fishponds (SK 830 037).

One adult on wall, at Barleythorpe Conference Centre, on 3rd. A new square, at the southern edge of the Old Oakham Canal, Ashwell. Large colony of stridulating males, and pairs in courtship, in rough grasses, on the edge of oilseed rape field, on 5th July (SK 862 104). Elevation: 112 m.

Large numbers of adults and a few nymphs seen and heard in first field, Quarry Farm, Stamford, on 6th July. Also on the 6th, 4 observed in long grasses, in the LRWT Bloody Oaks Quarry reserve.

Huge numbers colonised the new meadow / cycle track, along the minor road to Eggleton Church, on the 18th.

During the glow-worm survey at Burley Woods (before dark), on 21st, 4 found and caught for

identification, at lower ride, and then 2 in grasses around the Eight Riding Tree (SK 892 093).

On 31st, at 4.30 pm, 24 °C, an overcast dry afternoon: large numbers in pasture, including courting pairs and nymphs observed, North Arm 1, south shore, Rutland Water.

On the Eggleton reserve, 18th, the usual hotspots held very healthy populations: in the cut hay fields, and the uncut field near the Badger Watching Hide. New area, in the small grass field, next to the new lagoon, and also on the banks of the lagoon and the new hide (quickly colonised) by this species. In the rough grasses, at the edge of the Winter Trail, near Redshank Hide (all these are north of the centre). Then to the south of the centre, a few heard and seen in grasses, near Tern Hide, and the edge of the nearly completed new lagoon.

The first survey at Beaumont Chase Farm, on 23rd July, with Clive Jones and Dave Needham, we found the usual large numbers, in the same locations as the Meadow Grasshopper (including many nymphs).

On 31st July, at Dawn's Paddock, near Braunston, at 11.30 am, overcast with sunny intervals, 4 caught and identified. Then, at the nearby Woodland Trust plantation, The Seek, 2 observed in long grasses, between the trees (SK 839 072).

August sightings: Wing Fishing Lakes had 4 courting pairs around the first lake, on 3rd. My visit to the new site at Mill Lane, Empingham, resulted in a new square, and 4 pairs, and many adults seen, in the meadow (SK 957 086). Elevation: 64 m. On the RNHS meeting at the Lyndon reserve on the 14th,

2 females seen, and one male stridulating outside Tufted Duck Hide, and more courting pairs along the farm track, on the way back to the centre. Visit to the second field, at Quarry farm, on the 15th, found 2 stridulating males (TF 015 084). Elevation: 53 m.

Finally, on the second survey at Beaumont Chase Farm, on the 18th August, Top Wood Close, 4 observed in pasture. And in the conservation area at Bottom Wood close, huge numbers heard and seen in long grasses between trees, and in the edges of the wide cut ride. Nymphs observed.

Very many thanks to my intrepid orthoptera team: T Caldicott, F Chiverton, G Chiverton, J Crosby, M Grimes, N Gordon, C Jones, D Needham, P Rudkin, D Whitefield, L & G Worrall. Also, to our friends from the Bird Watching Fair, who accompanied us on the second Beaumont Chase Farm survey: J Lotter (Namibia), and X Munot (Ecuador).

PLANT GALLS REPORT compiled by Roy Lemmon

87 Empingham Road, Stamford PE9 2SU. Telephone: 01780 762051

July 2010

The month started with several reports from Verge 7; these were rusts on Common Mallow and Nipplewort, a mite gall on sloe and another mite gall on the recently recorded walnut. The latter, which appears as white patches on the underside of the leaves, is technically called an Erineum and is home to the aforementioned mites. Three records came from Burley Wood on the 5th and these were on Ground Ivy, Ash and Oak, the latter being the hedgehog gall.

Mite galls are much in evidence this month, on Spindle in Bloody Oaks Quarry on the 10th and also on Verge 7 again on the 29th. The former site also had a mite gall on Marjoram on the 10th, and Woodhead Castle produced another on Ash on the 15th. Burley Wood had a Mophead gall

on the 21st and the same was also recorded in Priors Coppice on the 22nd. This is caused by a fly which lays its eggs on the fern frond and causes it to assume a moplike tuft. Priors Coppice on the same date produced a raft of records of galls on Meadowsweet (two different galls), Goat Willow (2) and Field Maple. Pea galls and Robin's Pincushions were recorded in Ketton Quarry and Verge 7 on the 10th and 29th of the month respectively.

August 2010

A much quieter month, in fact there were only two reports! Both were from Bloody Oaks Quarry on the 24th, and were the rust on Hairy Violet and Robin's Pincushion on Dog Rose.

Thanks to: T Caldicott and R Lemmon

INSECTS AND OTHERS compiled by Gill Chiverton

20 Victoria Road, Stamford PE9 1HB. Telephone: 01780 753820

July 2010

Odonata

Banded Demoiselles – up to 4 were seen on 3 occasions at Leighfield Fishponds, and many were noted at Thorpe by Water.

Emerald Damselflies – single insects were seen on 4 occasions at Leighfield Fishponds and a total of 6 were recorded over the month at Stocken.

White-legged Damselfly – one female was recorded at Barleythorpe.

Common Blue Damselflies – one was seen at Priors Coppice, one was seen at Stocken and many were noted at Thorpe by Water.

Migrant Hawkers – single insects were noted on 2 occasions at Burley Wood.

Southern Hawkers – a single insect was noted at Leighfield and the first record for this species at Wing was 19th July.

Brown Hawkers – 3 were seen at Thorpe by Water and single insects were noted on separate dates at Burley Wood. At Barrowden Brown Hawkers were noted in a garden regularly over the month with one seen consuming a Small White butterfly on one occasion.

Emperor Dragonflies – were seen on 3 dates at Leighfield Fishponds and one was recorded at Stocken.

Four-spotted Chasers – were recorded twice at Leighfield Fishponds.

Broad-bodied Chasers – many were recorded emerging from a garden pond at Empingham (see photos opposite).

Black-tailed Skimmers – 7 insects were recorded at Leighfield Fishponds and 5 were noted at Burley Woods over 3 visits.

Hemiptera

Hawthorn Shield Bug *Acanthosoma hemorrhoidale* – one was recorded in Barrowden.

Forest Bug *Pentatoma rufipes* – 2 were caught in a moth trap at Eyebrook.

Common Froghoppers *Philaenus spumarius* – a total of 7 were noted over the month at Stocken.

Leafhopper *Cicadella viridis* – one was recorded at Stocken.

Cabbage Aphid *Brevicoryne brassicae* and **Cabbage White Fly** *Aleyrodes proletella* were numerous at Stocken.



A Broad-bodied Chaser emerging from a garden pond at Empingham, photo by Alan Lambert.

Common Damsel Bug *Nabis rugosus* – 7 were noted at Stocken.

Neuroptera

Green Lacewing *Chrysopa perla* – one insect recorded at Stocken, and a large number of **Green Lacewings** were seen flying around an oak tree at Stocken, and a further nine were recorded there later in the month.

Diptera

Marmalade Hoverflies *Erisyrphus balteatus* – 20 were noted at Stocken.

Common Banded Hoverflies *Syrphus ribesii* – 7 were also seen at Stocken.

Pied Hoverflies *Scaeva pyrrhstri* – 12 recorded at Stocken.

Picture-winged Fly *Urophora carduii* – one recorded at Stocken.

Later in the month 'swarms' of **Marmalade** and **Common Banded Hoverflies** were again noted at Stocken.



Broad-bodied Chasers, photos by Alan Lambert.

A few **Green Bottle Flies** were also noted at Stocken.

Hymenoptera

A **Hornet** *Vespa crabro* was trapped in a tractor cab at Stocken.

A **Tree Wasp** *Dolichovespula media* was found in a greenhouse at Empingham.

A **Common Wasp's** nest *Vespula vulgaris* was noted to be very active at Stocken.

Two different members of the family *Ichneumonidae* (parasitic insects) were seen at Stocken.

Honey Bees *Apis mellifera* – 19 noted at Stocken.

A **Potter Wasp** was also seen at Stocken.

A **German Wasp** *Vespula germanica* was caught for identification at Stocken.

Leaf Cutter Bees were seen to be busy on roses and forsythia at Stocken.

Bumble Bees: Garden *Bombus hortorum* – one large insect and numerous smaller ones were noted at Barrowden; **Red-tailed** *Bombus lapidarius* – numerous insects at Barrowden, 20+ at Stocken, and also recorded at Verge 7, Woodhead Castle and Priors Coppice; **White-tailed** *Bombus lucorum* – many workers seen at Priors Coppice; **Common Carder Bee** *Bombus pascorum* – recorded at Verge 7 and Priors Coppice; **Buff-tailed** *Bombus terrestris* – one dead beside the road at Verge 7 and also recorded at Stocken.

Coleoptera

Ladybirds *Coccinellidae*: **2-spot** – a total of 16 were recorded at Stocken; **7-spot** – a total of 22 were also noted at Stocken; one **22-spot** noted at Stocken; one **24-spot** recorded at Woodhead Castle; **Harlequin** – 5 *f.succinea* and larvae and one *f.spectabilis* were noted at Stocken.

Pollen Beetles *Meligethes aeneus* were numerous at Stocken.

A **Wasp Beetle** *Clytra arietis* was noted at Stocken.

A number of **Violet Ground Beetles** *Carabus violaceus* were also noted at Stocken.

A **Rove Beetle** *Creophilus maxillosus* was found in a compost bin at Stocken.

Leaf Beetle *Gastrophysa viridula* – 20 recorded on a dock stem at Thorpe by Water ('luminous metallic green and shining in the sunshine!').

A **Burying Beetle** *Silpha atrata* was extracted from a grass tussock near the trout hatchery by the Exton meadowland.

Arachnida

Web-spinning Spider *Araniella cucurbitina* – a bright green insect was noted in sweet peas at Wing.

Garden Spider *Araneus diadematus* – 3 were recorded at Stocken.

Woodlouse Spider *Dysdera crocata* – one noted at Stocken.

Terrestrial Gastropoda

Large Black Slug *Arion ater* – several seen in the rides during an evening at Burley Wood.

Garden Snail *Helix aspersa* – 2 large specimens were noted at Verge 7.

August 2010

Odonata

An **Emerald Damselfly** was recorded at Leighfield Fishponds.

Southern Hawker Dragonflies were recorded at Wing, Leighfield and Stocken.

A **Brown Hawker Dragonfly** was recorded as 'patrolling regularly' at Barrowden.

Migrant Hawker Dragonflies were noted at Wing, Burley Wood and Leighfield.

A **Common Darter** was seen at Stocken.

Emperor Dragonflies were recorded at Barrowden and Stocken.

Dermoptera

Common Earwigs *Forficula auricularia* were plentiful at Stocken.

Hemiptera

A **Green Shield Bug** *Palomena prasina* was seen at Stocken.

Forest Shield Bugs *Pentatoma rufipes* were recorded at Wing, Barleythorpe and Lyndon Reserve car park.

Sloe Bugs *Dolycoris baccarum* were noted at Stocken and Burley Wood.

Potato Capsid Bugs *Calocoris norwegicus* – 3 were seen at Stocken.

One **Nettle Ground Bug** *Heterogaster urticae* was noted at Stocken, as was one **Common Damsel Bug** *Nabis rugosus*.

Two **Common Frog Hoppers** *Philaenus spumarius* were seen at Stocken.

Tipulidae

Nine **Spotted Craneflies** *Nephrotoma appendiculata* were recorded at Stocken.

Neuroptera

Six **Green Lacewings** were recorded at Stocken.

Diptera

Green Bottle Flies were noted over the month at Stocken.

At Stocken **Marmalade Hoverflies** *Erisyrphus balteatus* were very numerous over the month, 10+ **Common Banded Hoverflies** *Syrphus ribesii* were

recorded, as were 2 **Pied Hoverflies** *Scaeva pyrastris* and one **Long Hoverfly** *Sphaerophoria scripta* and small numbers of **Bumblebee Hoverflies** *Volucella bombylans*.

The following were also recorded at Stocken: one **Cleg Fly** *Haematopota pluvialis*, 5 **Flies** *Tachina fera*, 4 **Yellow Dung Flies** *Scathophaga stercoraria* and one **Flesh Fly** *Sarcophaga carnaria*.

Hymenoptera

Several **Common Wasps** *Vespa vulgaris* were noted at Barrowden and many **Common Wasps** were also noted at Stocken. Two **Hornets** *Vespa crabro* were seen at Stocken.

Red-tailed Bumblebees *Bombus lapidarius* were recorded at Barleythorpe and Stocken.

Twelve **Honey Bees** *Apis mellifera* were noted at Stocken as were many members of the family *Ichneumonidae*.

Two **Tree Wasps** *Dolichovespula media* were recorded at Stocken.

Several **Buff-tailed Bumblebees** *Bombus terrestris* were seen at Stocken and also a **Spider Hunting Wasp**.

Coleoptera

Two **Violet Ground Beetles** *Carabus violaceus* were noted at Stocken, as were four **Soldier Beetles** and a **Devil's Coach-horse** *Staphylinus olens*. One **Nut Weevil** *Curculio nucum* and also **Pea Weevils** *Sitona lineatus* were seen at Stocken.

Ladybirds: 7-spot were recorded at Barleythorpe, Barrowden and 47 were noted at Stocken. **2-spot**

– 16 were recorded at Stocken. One **14-spot** was also at Stocken. A **Harlequin** *f.conspicua* was seen at Barleythorpe. A **Kidney-spot** was recorded on an asparagus fern at Uppingham.

A **Lily Beetle** *Lilioceris lili* was seen at Barleythorpe. A good number of **Asparagus Beetles** *Crioceris asparagi* (both male and female) were recorded on asparagus ferns in a garden at Uppingham – a very distinctive beetle as shown on the image accompanying the record. **Bloody-nosed Beetles** *Timarcha tenebricosa* – many have been recorded in Dawn's Paddock over both months and also in the same location in this month two **Soldier Beetles** *Rhaonycha fulva* were seen.

Terrestrial Isopoda

30 specimens of the **Common Rough Woodlouse** *Porcellio scaber* were recorded at Stocken.

Arachnida

The following spiders were all recorded at Stocken – two **Daddy-long-legs** *Pholcus phalangioides*, one **Sheet-web** *Linyphia triangularis* and one **House** *Tegenaria gigantea*.

Terrestrial Gastropoda

A **Large Black Slug** *Arion ater* was seen feeding on bread under a bird table at Stocken.

Garden Snails *Helix aspersa* – many 'adventurous' snails recorded after dark at Barrowden!

A **Yellow Slug** *Limax flavus* seen after a period of heavy rain at Barrowden.

Very many thanks for all records go to: T Caldicott, F Chiverton, J Crosby, C Gallimore, J Harvey, R Lemmon, C R Jones, D Perril, P Rudkin, D Whitefield, and L & G Worrall.

GLOW-WORM NOTES compiled by Linda Worrall

6 Redland Close, Barrowden LE15 6ES. Telephone: 01572 747302



End June/July 2010

It has been a relatively good season this year.

Barrowden Verge 3, Luffenham Road SK948005: 28.6: 16 on west verge, a very good count, plus one on east, at 10.30 pm.

Clipsham Quarry SK980155: 30.6: First glow 10.13 pm; 25 glows on Clay Bank, 6 on North Bank. A good count.

Ketton Quarry Geological Trail SK978053: 3.7:

A total of 14 glows, 6 in flat area next to car park, 8 in geology trail/barbecue area. **10.7:** 30 glows seen, the highest number in Rutland this year. 2 on edge of car park, 7 in adjacent flat area. 7 at the bottom of The Valley, 14 in geology trail/barbecue area. No males were seen. Led by Jenny Harris with the Leicestershire Literary and Philosophical Society, 11 people enjoyed this hunt. 2 weeks later, one observer saw 20, a good late number.

Near Foster's Bridge Ketton SK963033: 17.7:
Peter Scott's son remembered seeing glows in a friend's garden over 10 years ago, so they checked and found 1 glow! Such good news.

Barrowden Verge 17, Back Rd SK945003: to 20.7:
Reports on north verge from dog walker, with up to 4 or 5 glows some nights.

Burley Wood, Junction of Compartments 18, 20, 15, 16, 25, 21, 23 SK 893098: 21.7: PJR reports: '10.10 pm Roy Lemmon found the first female glow-worm approximately 15 yards from the hide, at the edge of the verge. Second glow at 10.20 pm, this female was being mated. The final glow was at 10.30 pm, this time in deep vegetation, spotted by Val Storey. We searched for another 20 minutes, but no more observed. Being much later this season, we did not expect to find the 32 glows that we noted in 2009. However, 3 glows and one being mated are better than none, so we were satisfied.' Indeed!

Outside Rutland

Leicestershire, Stonesby Quarry SK813250: 2.7: 2 glows. **9.7:** 1 glow.

Leicestershire, Charnwood Lodge SK458155:
some have been seen this year.

Northamptonshire, Castor Hanglands Reserve TF124025: mid-June: Warden Chris Gardiner found a new location for him at Blacklands, on the Helpston Road side of the reserve; just one glow, but he feels there would have been others elsewhere.

Northamptonshire, Barnack Hills and Holes NNR TF075046: 6.7: On a walk with the public, the Warden found 12 glows. One female had a male with her.

East Sussex, east of Ringmer (3 miles east of Lewes, north of South Downs): 31.7: 1 glow on house drive, subsequently relocated to safer grassy patch nearby. I was rung at 10.45 pm by the finder, as he and a friend were intrigued, had looked up the website www.glowworms.org.uk and found I was a contact who happened to be available. The website said 'Don't pick them up' but they were afraid their glow-worm would be squashed if they didn't. Among other things, I explained the reasons for not moving delicate females away from potential males, but agreed this was an emergency. They said they would report any developments.

Thanks to everyone who looked: M Allsopp, J Dawson, D Duckett, C Gardiner, J Harris, R Lemmon, T Lipton, P & E Mann, B & D Parker, G Robinson, P J Rudkin, P Scott, V & T Story, D & N Whitefield, members of the Leicestershire Literary and Philosophical Society

MYCOLOGY NOTES compiled by Linda Worrall

6 Redland Close, Barrowden LE15 8ES. Telephone: 01572 747302

No report this month, please continue sending in your records.

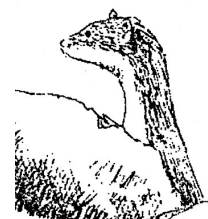
MAMMAL REPORT compiled by Linda Biddle

21 Waverley Gardens, Stamford PE9 1BH. Telephone: 01780 762108

May/June/July/August 2010

This report includes your records from May/June as well as July/August.

Otters have been as elusive as ever but indicated their presence at Tinwell Pumping station in early May, leaving spraint on concrete by the A1 Bridge over the River Welland, and the remains of a large dead fish was found close to the lower lake at Fort Henry in mid-June.



There is an interesting report of **Badgers** carried over from the end of April which comes from Grampian Way Oakham. Food put out for the birds, mealworms, birdseed and raisins, on a ground feeder late at night for the next morning, had disappeared before sunrise, and the observer looked out of the window when going upstairs at about 9.30 pm on 19th April to see a large Badger

helping itself to the feast for about 20 minutes. It left finally through the hedge and went along the path by the river Reek towards Glebe Way. It returned (who wouldn't!) on the 20th to the 26th April, and from 27th to 30th it was not seen, but the food disappeared before dawn! The report was accompanied by a photograph of the badger tucking into the buffet supper.

A Badger was out one sunny afternoon in early May as I walked along a track adjoining a field of oilseed rape. The yellow flowers were agitated almost parallel to me, but they moved forward quickly and as we approached a sett the badger ran across the track about 4 yards in front of me and disappeared into an entrance hole. Later in the month a Badger cub was disturbed by my dogs as it rested above ground close to the sett. It rushed towards an entrance hole, but the curious dogs cornered it. Far from cowering afraid the plucky little thing – about one-third the size of each dog – stood its ground and stuck its nose into the air, showing clearly the black and white colouring under its chin, as a threat display, and made a very scary noise – a kind of throaty growl or grunt. The dogs were even more curious, but not brave enough to go near, and the cub eventually ran to another entrance hole and disappeared. At the end of May when walking on a new path in Pickworth Wood, a badger crossed the path in front of me and went into the undergrowth. A large latrine area was found in May in Ketton Quarries, and others at Woodhead castle site near Pickworth. A badger road casualty is reported from the A1 slip road turn to Pickworth.

A **Stoat** was observed as it busily hunted in Lyndon NR car park at the end of April, and another safely crossed the road in front of a car on Holywell road near Clipsham village at the end of August. Two **Weasels** were seen, one in August on the roads between Wing and Morcott, and another came for a drink at the Worrall's garden pond in July, a small 'looping' animal which disappeared up the bank when spotted.

A **Fox** was seen one early morning in June in the brickworks field on the edge of Stamford, and a well-grown cub pattered along the edge of Banthorpe Gravel pit in July. A cub was a road casualty, between Ryhall and Great Casterton in early June. Other foxes are reported from Little Haw and Burley Wood in June, 2 seen on 2 occasions in Burley Wood in July, 2 together at Pickworth in August.

Hedgehogs were seen in Grampian Way Oakham feeding on seeds on a bird table, during May, on one occasion a small one tumbled off the table after looking over 3 sides. The Worralls had at least 2 hedgehogs each night in May, consuming large quantities of peanuts, and this continued through June. A neighbour also had visits from hedgehogs, and in July a small juvenile was rescued from hunger and thirst in the very dry conditions by being given catfood and water. Courting behaviour was seen in early August (hedgehogs!) in the Worrall's garden, and they also had a visit from a very small one – wondered if it could have been the same one rescued the previous month. Hedgehogs continued their visits to Redland Close throughout August and also visited another garden in Oakham during the month.

Fresh **Mole** workings were seen near the pond in Burley Wood in May, in Prior's Coppice in June and July, and a mole ran over the lawn in Dr Gallimore's garden in Wing in August, where mole activity is ever present! A **Common Shrew** was found dead on the clay bank at Clipsham Quarry, another on the path close to the Trout Farm, and a dead **Pygmy Shrew** was found in Burley Wood, all records during July. **Bank Voles** returned to the broccoli patch in Waverley gardens in June, and a dead one was found in Woodland View Oakham on 1st July. At Langham in August a **Short-tailed Vole** was seen running along the wall of the house until the observer disturbed his track. It diverted across the garden, and dived under the plants. A **Wood Mouse** was seen in Barmstedt Drive Oakham feeding on a peanut feeder, and during June they were regularly seen in the greenhouse and patio of Waverley Gardens.

Grey Squirrels are reported in May from Pugs Park Spinney, Exton Park, 3 in a sycamore tree and one in the Worrall's garden, Redland Close Barrowden, and in June an adult and one young visited a bird feeder in Derwent Drive Oakham.

A total of 15 reports of **Brown Hares** have been received, from Lyndon, Thorpe by Water, Great Casterton, Pickworth, Exton Park, Brooke Road Oakham, Seaton, Morcott, Wing, Tixover, Stocken Hall and Barrowden.

Dead **Rabbits** were found at Bloody Oaks, and one on verge 7 was suffering badly from myxomatosis. At Belmesthorpe black rabbits were seen on either side of the road in July, and later another on the west side of the village. They were all seen with normally coloured rabbits.

In May 7 **Fallow deer** were seen at Pickworth, and 6 on verge 7, and in the woods at Pickworth, Clipsham, Little Haw and Burley, large numbers were seen as usual. Unusually in June on one visit to Clipsham none were seen, and numbers were significantly reduced in subsequent visits. The recorders saw numbers increase again in July

and August, and numbers of fawns were seen from mid-June onwards. **Muntjak** were found in Clipsham, Little Haw and Burley Woods, and one seen in front of Deep Water hide, Lyndon, another on A6121 South Luffenham.

Finally a **Roe Deer** was flushed from compartment Q Tunnely Wood in May.

Many thanks for all your records: M Branston, A Comber, Dr Gallimore, M Grimes, J Harris, J Hutton, S Leach, R Lemmon, A Malcolm, J Myers, E Northen, P & E Mann, T Mitcham, B & D S Parker, P J Rudkin, A R & M A Thorp, L & G Worrall

BAT REPORT compiled by Jenny Harris

41 Woodland View, Oakham, LE15 6EJ. Telephone: 01572 755274

No report this month, please continue sending in your records.

